

Let your energy savings work for you

Remote Energy Management



Schneider
Electric

If saving energy is difficult and expensive, what's the point?

Saving energy isn't just a hot topic, it's a necessity, but you often hear how expensive and complex energy efficiency initiatives can be to implement.

Many large companies purchase complex, costly energy management software and hire on-site energy experts to reach their goals, which can be significant and well worth the investment. Great, if you are a big company with the time, money and expertise.

But what if you are a small or medium-sized company without deep pockets for an energy information system and the extra staff to supervise it? Does that put energy savings beyond your reach?

Not any longer.



Smash the barriers!

Schneider Electric presents Remote Energy Management, a hosted solution for saving energy. Scalable, cost-effective and easy to deploy, Remote Energy Management makes energy management accessible and mobile to match today's style of communications.

Remote Energy Management profiles energy usage and the carbon footprint in your facilities, no matter how numerous or geographically dispersed they are.

Through extensive and reliable energy analytics and very experienced consultants to personally interpret the data, Remote Energy Management identifies opportunities for energy efficiency, sets a plan improvement and tracks the impact.

The end result... you save money, adhere to government regulations and demonstrate your environmental commitment.



Low-risk, easy-to-deploy and easy-to-manage.

Remote Energy Management is energy efficiency made easy.

Smart, focused information... when and how you want it

In today's world of endless communications options, you control how you receive information – through an app on your phone, email, news feeds

Remote Energy Management drills for your energy information and makes the data available outside of the software – freeing you from a dedicated workstation.

Get real-time information for a real world environment

Easily set up a dashboard on your iGoogle page for quick reference and close monitoring

Email your energy reports to stakeholders



Tap into the data on your smart phone



Buildings



Industry



Residential

Simple reporting, powerful message

Good decisions come from high-quality information. Predefined reports make getting the facts you need easy, and you can save or export them for later reference. Dynamic reports enable you to adjust date ranges in order to compare facilities and to easily establish reliable benchmarks that are normalized against factors such as weather, production and occupancy.

Rely on Remote Energy Management for:

Energy savings analysis

- > Profile your energy use to understand your organization's usage patterns, history, and costs, then compare and benchmark sites against themselves or the average of all sites.
 - Meets international standards for measurement and verification Forecast the effect of your efficiency efforts on a facility and verify that the forecasted savings plan is on track.
- > Find areas of improvement that is customized to your facility. Set parameters for peak shaving, power factor correction and energy control. Optimize equipment run hours and settings to avoid setting costly new demand peaks.



Consumption

Bill estimation

- > Accurately estimate your energy bills and assess what utility costs would be on different utility rates.



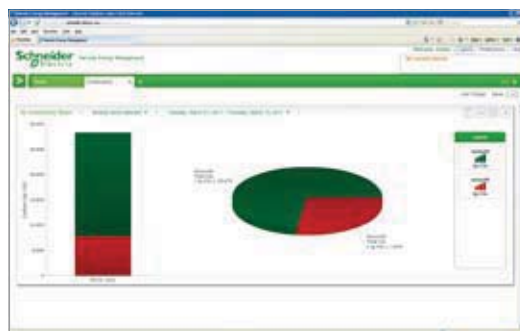
Bill estimation

Verify utility bill accuracy and share energy cost information



Sustainability demonstration

- > Report your carbon footprint and graphically display your energy usage data including CO₂ emissions.
- > Assess site performance and which facilities require corrective action.
- > Change your goals whenever you desire without a hassle.

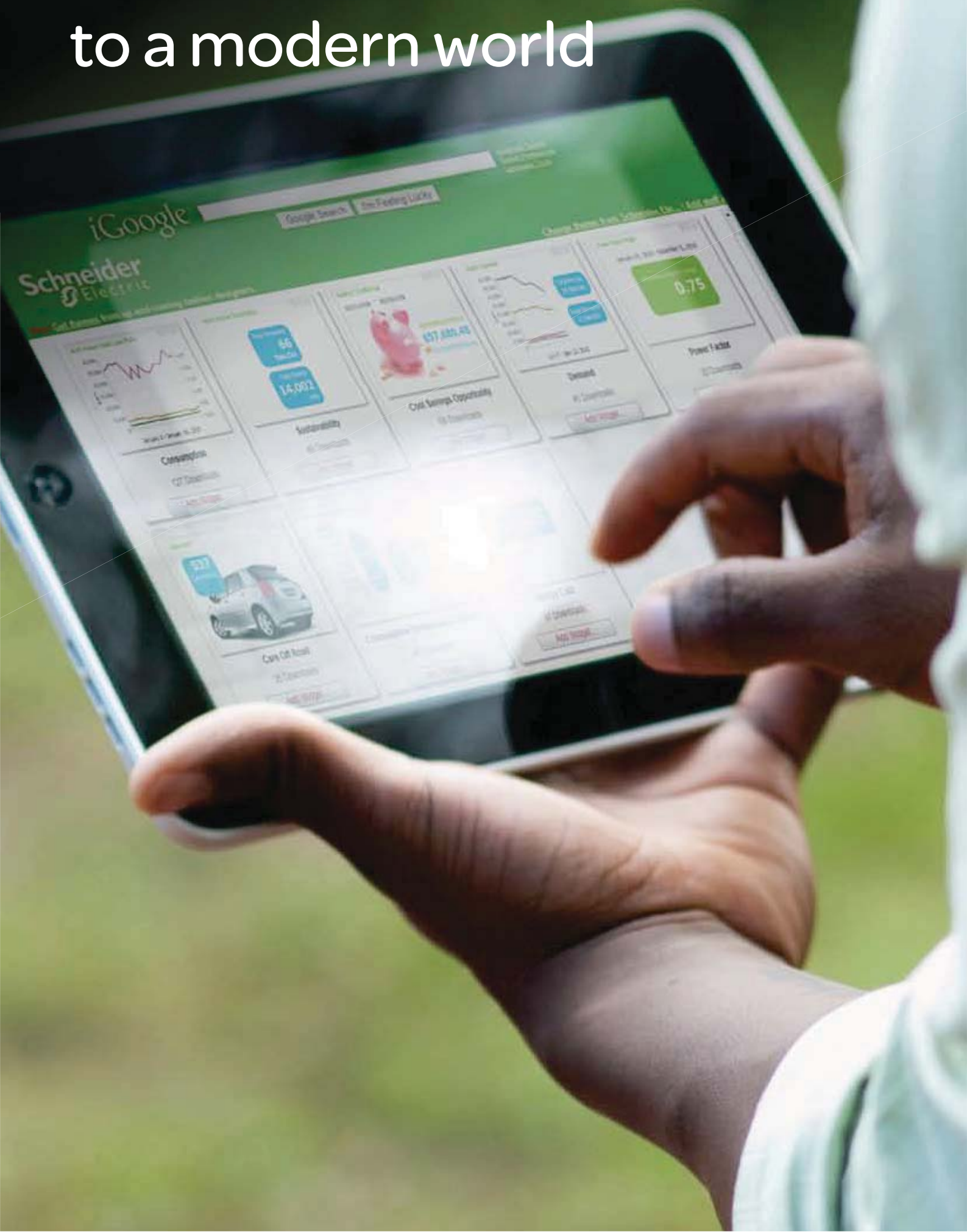


Global view

Measure against targets and easily identify poor performance



Bringing Energy Efficiency to a modern world



Trust our experts to tailor your energy efficiency plan

Our energy specialists offer you the most from your subscription to Remote Energy Management.



They guide your tailored energy efficiency plan every step of the way, whether that includes rate negotiations with your utility provider, making intelligent energy purchases, trending your power factor, or implementing demand response initiatives.



Trust in the proven, reliable guidance of the Global Specialist in Energy Management™ - Schneider Electric.

Make the most of your energySM

To find out more, please visit www.schneider-electric.com

Schneider Electric Industries SAS

35, rue Joseph Monier
CS 30323
F- 92506 Rueil Malmaison Cedex

RCS Nanterre 954 503 439
Capital social 896 313 776 €
www.schneider-electric.com

998-4240_GMA

As standards, specifications and designs change from time to time, please ask for confirmation of the information given in this publication.



Printed on ecological paper

Publication: Schneider Electric
Photo: © Veer - Schneider Electric
Design-Layout: SEDOC
Printing:

04-2011