

PowerLogic® Tenant Metering

Billing and Meter Reading
Software Solutions





PowerLogic® Tenant Metering Commercial Edition software

Take the difficulty and guesswork out of tenant sub-billing with the sophisticated tools provided in PowerLogic Tenant Metering Commercial Edition software. Whether you require a billing solution for new construction, or want to integrate with your existing infrastructure, this software meets your unique needs and budget.

PowerLogic® Tenant Metering Commercial Edition software features RateWizard®, an easy to use configuration tool with sophisticated reporting capabilities. Use the detailed information it provides from load profiles, plus daily, weekly and monthly energy consumption trends to allocate and recover the true cost of your facility's utilities for both tenant spaces and common areas.

Use it to improve tenant retention and increase the value of your property with fair and transparent billing. Or promote increased consumer accountability for energy efficiency, especially at government facilities that need to adhere to cost allocation regulations.

Key Benefits

- Ideally suited for accurate billing of commercial tenant properties
- Comprehensive invoicing for: water, air, gas, electricity and steam (WAGES)
- RateWizard rate configuration tool supports demand, time of use, flat and tiered rates, seasonal rates and power factor
- Fully automated meter reading functionality
- Easy report generation for viewing load profiles, energy consumption trends, energies by month, week and day
- Scalable support for up to 2000 metering devices
- Compatibility with hundreds of third-party Modbus metering devices
- Promote accountability and energy conservation to make your building more "green"
- Reduce administrative costs with automatic invoice generation and data collection/correction
- Recoup energy costs from tenants based on their true consumption
- Adapt to your region's regulatory requirements with flexible billing methods
- Assists you in implementing energy efficiency initiatives essential to obtaining LEED certification

PowerLogic® Tenant Metering Standard Edition software

Automatically collect meter data and generate tenant billing or account statements with PowerLogic® Tenant Metering software. This entry-level application is an extremely cost effective method for billing functions where total consumption is all that is required.

Featuring an intuitive graphical interface, the software is simple to setup and has an export tool for data integration with third party-billing services to enable complete outsourcing of utility billing activities.

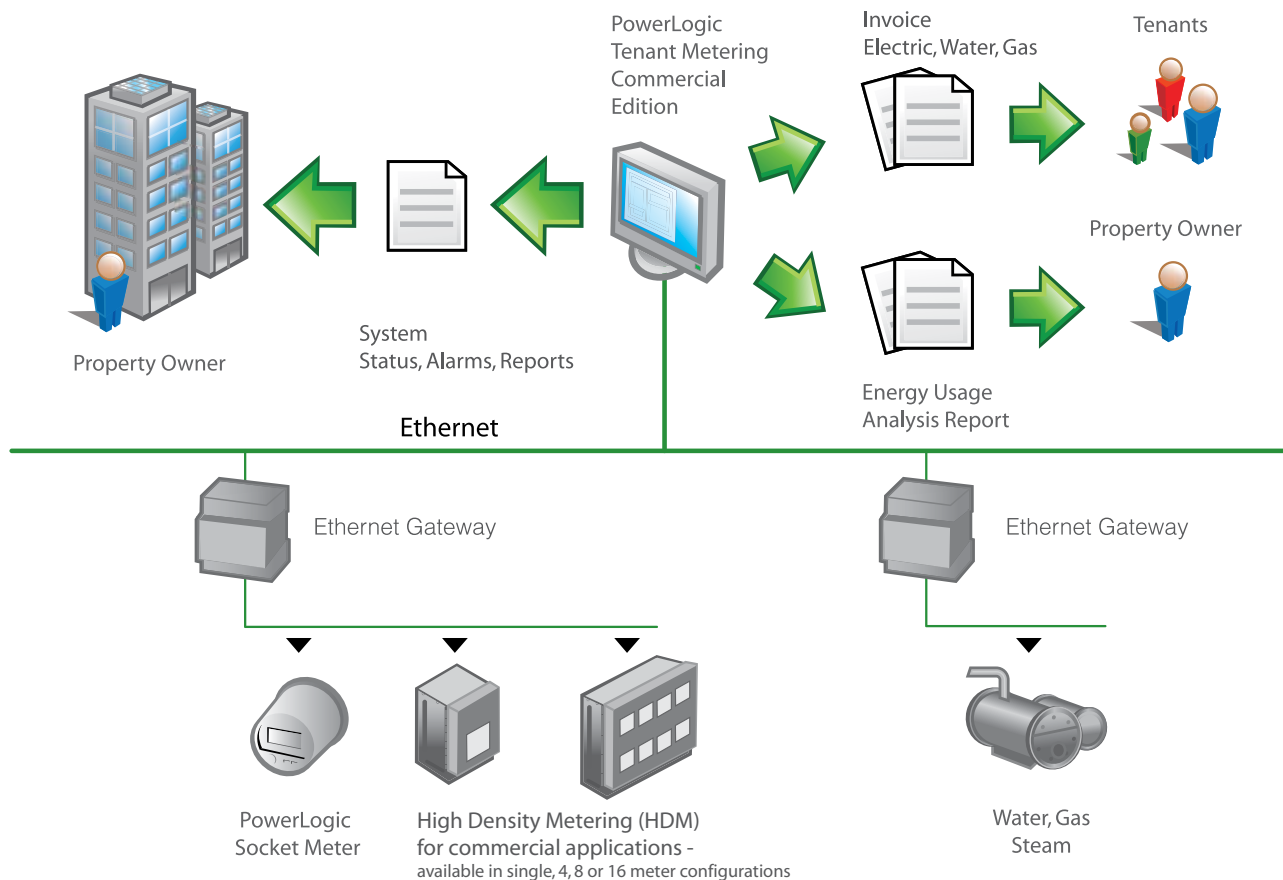
Key Benefits

- Cost effective
- Extremely easy to use
- Automatically collects meter data

PowerLogic submetering solutions ... the big picture

Accurate billing is difficult without accurate information. Our advanced submetering software supports PowerLogic socket meters, power and energy meters, branch circuit monitors and compatible Modbus-communicating meters.

Offering more than just basic usage metering, our scalable PowerLogic® systems give you powerful tools for monitoring energy efficiency and controlling costs. They are ideal for new construction or for retrofitting in existing apartments, shopping centers, offices — anywhere you need precise electrical information for multiple tenants. Plus, you can always count on Square D expertise for all your support needs.



The Complete Solution for Commercial Tenant Billing

PowerLogic® Tenant Metering software allows you to allocate and recover the true cost of your facility's utilities. Intuitively designed even for the most novice computer user, PowerLogic® Tenant Metering software is available in two different editions.

PowerLogic® Tenant Metering Commercial Edition software is ideal for more demanding billing applications, providing the flexibility necessary to manage a wide range of tenants, multiple locations and comprehensive utilities. Equipped with a proven billing engine, it provides fully customizable billing periods and rate structures so you can better manage energy costs — and the bottom line.

PowerLogic® Tenant Metering is the entry-level submetering software that delivers basic meter reading, tenant billing and statements. It allows you to account for total energy consumption down to the very last kWh.

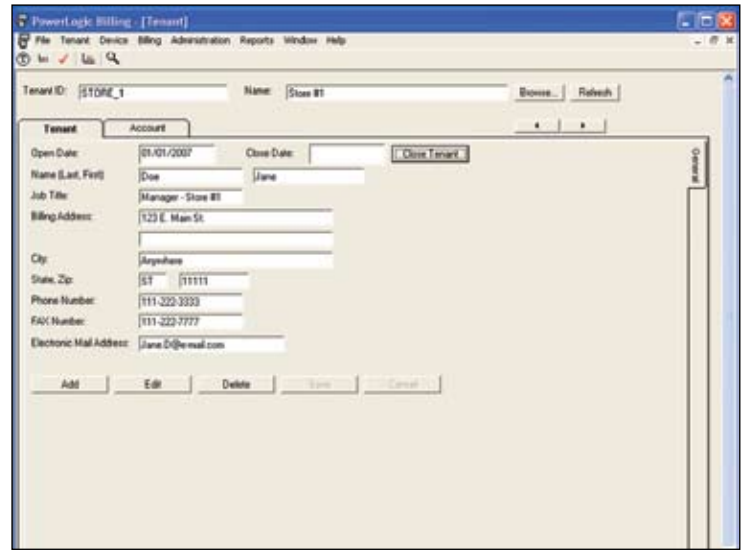
Invoice #	Customer ID	Bill Date	Payment Due	Amount Due
152	STORE_1	5/4/2007		

Tenant Information	
Tenant Name:	Store #1
Property Address:	255 Tech Park
State:	TN
City:	Levinville, TN 37086
Country:	USA

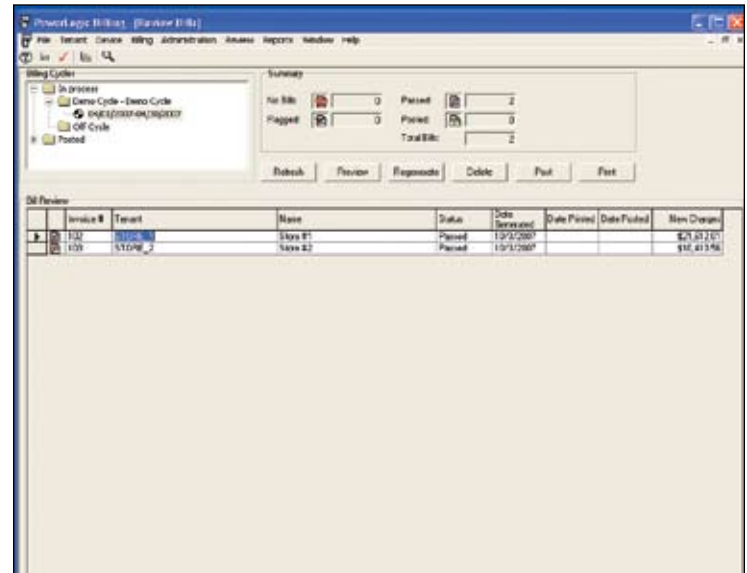
Electric Details	
Rate:	Simple Electric TOU Demand Rate
Account ID:	STORE_1
Meter #:	Shared Device - 98%

Charges	Quantity	Total
Customer Charge		\$16.00
Cycle Peak Demand @ 94032007 21:30	775 kWh	
Cycle Peak @ 04032007 12:30	775 kWh	\$3,000.00
Mid-Peak @ 04032007 19:15	775 kWh	\$2,200.00
Off-Peak @ 04032007 21:00	775 kWh	\$6,000.00
Demand Charge		\$4,000.00
Cycle Peak	0.3000/kWh	\$6,230.00
Mid-Peak	36.3740/kWh	\$3,543.00
Off-Peak	07.1180/kWh	\$5,527.00
Energy Charge		\$15,000.00
Total Electric		\$31,612.00

With PowerLogic® Tenant Metering Commercial Edition, you can combine each tenant's utilities on a single invoice customized with your company's logo and remittance information.



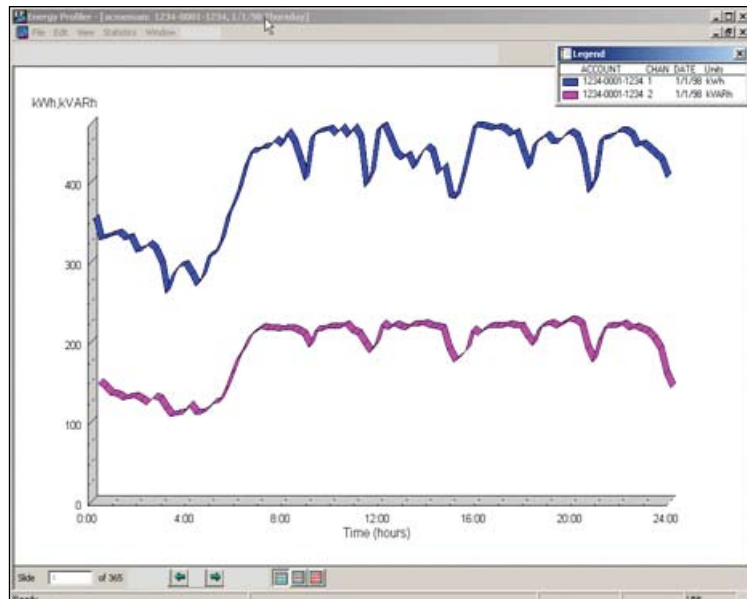
Personalize account details including contact information, submeter device assignment, billing rate and tenant independent billing cycles using the Tenant Account Management feature.



Tenant Metering Commercial Edition invoice review screens ensure managerial review prior to invoice generation.

PowerLogic® Tenant Metering software solutions for billing and meter reading are ideal for:

- Commercial office properties, large and small
- Multi-tenant buildings
- Mixed-use properties
- Shopping malls
- Campuses
- Government facilities



View the load profile reports by day, week or month and identify peak consumption periods with Tenant Metering Commercial Edition.

Software Selection Guide

	PowerLogic Tenant Metering	PowerLogic Tenant Metering Commercial Edition
General Features		
Single workstation software	■	■
Supports up to 2000 devices	■	■
Microsoft MSDE database	■	■
Automatic Meter Reading		
Supported devices	PowerLogic devices*	PowerLogic devices* and Modbus-compatible devices
Interval logging of metered data	Daily	Every 15 minutes
Support for multiple utility devices (water, air, gas, electricity and steam)	–	■
Resets for applicable meters: peak demand, date/time	–	■
Error detection diagnostics for metering device status	–	■
Ethernet/serial communication	■	■
Onboard data retrieval – automatically retrieve data from device memory directly to the software for enhanced data integrity		■
Billing and Reporting		
Billing for demand (kW, kVAR)	Billing based on kWh	■
Complex rate structure support – RateWizard for simple and complex billing, including demand, time of use, flat and tiered rates, seasonal, power factor	–	■
Tenant account management – Personalize account details including contact information, submeter device assignment, billing rate assignment and tenant independent billing cycles	■	■
Support for independent rates and multiple meters per tenant	–	■
Invoice customizable for logo and remittance information	–	■
Demand billing and WAGES invoicing support – Match your tenant invoicing with utility billing methods and incorporate multiple load types and utility usage into one invoice per tenant	–	■
Invoice summary for managerial review	–	■
Multiple billing cycles on a single invoice	–	■
Reports: load profile by day/week/month, invoice summaries – View up to one year of energy data with the utility-proven reporting tool that provides statistical data analysis to help you identify periods of peak consumption	–	■
Flexible device allocation – Distribute common area utility costs among tenants according to flexible criteria	–	■
Automatic data validation – identifies and corrects missing data using a utility-approved methodology	–	■
Automatic database size management – store up to 10 years of tenant invoices	–	■
Graphical view of energy data	–	■
Export up to one year of billing data to Microsoft Excel®	■	■
Export data to third-party billing services	■	■

* PowerLogic PM600; PM700; PM800; CM2000; CM3000; CM4000; ION6200; Micrologic Type P & H; Enercept Energy Meter and Multi-circuit Meter (MCM 8364)

Installation and Configuration Services

We encourage you to use Schneider Electric/Square D Services to install and commission your PowerLogic® Tenant Metering Commercial Edition or Tenant Metering software. Schneider Electric/Square D Services will quickly configure your system to establish communication with your meters, build your rate structures and set up your tenant accounts. Alternatively, you may choose to install the software and configure your system yourself. You can always call Technical Support at (615) 287-3400 at any time for assistance.

Ordering Information	
PowerLogic Tenant Metering Commercial Edition	TMSCE
PowerLogic Tenant Metering	TMS



"The 2007 award recognizes Schneider Electric for its technological advancements and wide product range in the field of power quality (PQ) and energy management solutions. In total, this is the fourth award that Schneider Electric and [acquired] Power Measurement have received from Frost & Sullivan in recognition of achievements in this arena."
 — Prithvi Raj, Frost & Sullivan research analyst

Schneider Electric -- North American Operating Division
 295 Tech Park Drive
 LaVergne, TN 37086
 Tel: (866) 466-7627 Toll Free
www.PowerLogic.com
www.SquareD.com

As standards, specifications and designs develop from time, always ask for confirmation of the information given in this publication. PowerLogic, ION, and ION Enterprise are either trademarks or registered trademarks of Schneider Electric.

