

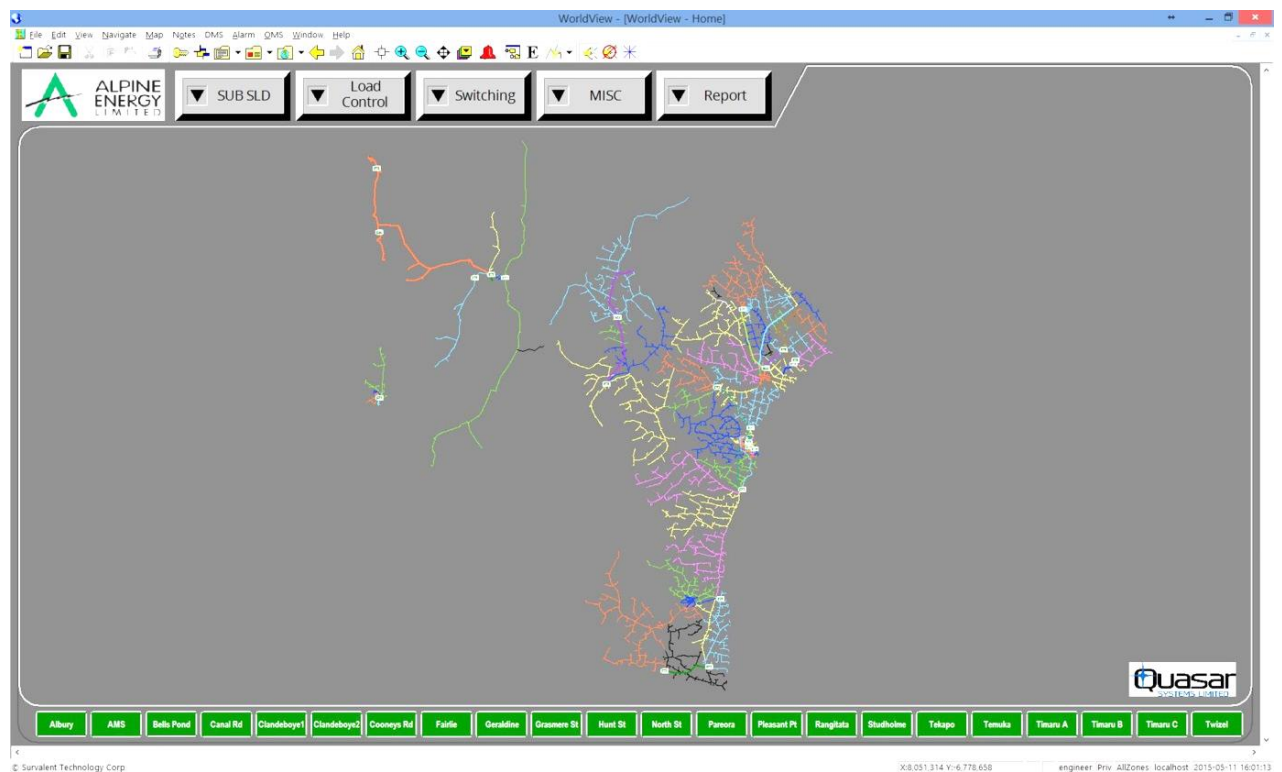
## Alpine Energy SCADA – Stage Two

Recently we successfully commissioned the display of Alpine Energy’s Geographic Information System (GIS) into their Survalent SCADA. This completed the second stage of a three stage project with Alpine Energy to replace their previous SCADA system with a Survalent SCADA.

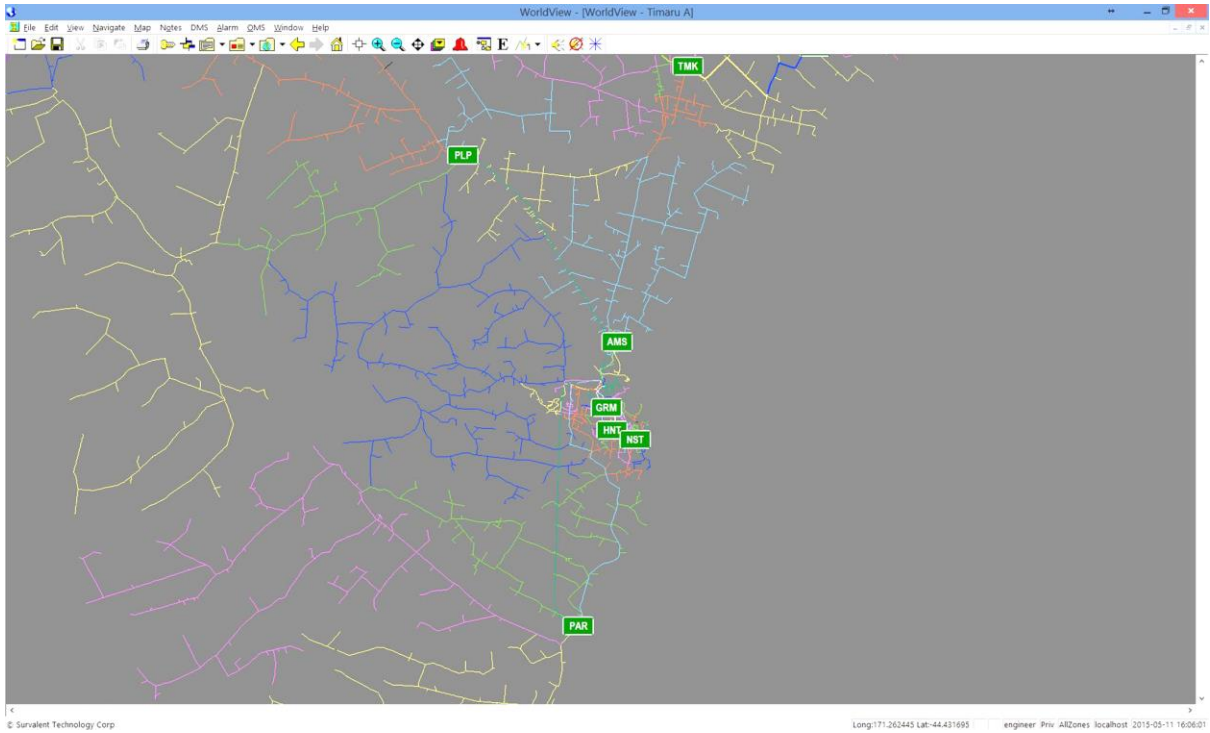
The project began in the middle of 2014, and the first stage of the project involved setting up the new Survalent SCADA to mimic the SCADA that Alpine were using. The graphics were similar to Alpine Energy’s previous SCADA system to ease the transition to their Survalent platform. Stage one was completed in November 2014 and set the base for Alpine to grow their system. The final stage of the project currently under development involves displaying Alpine Energy’s AutoCAD’s switching drawings in their Survalent SCADA.

In the future Alpine are planning to extend the scope of their SCADA and are considering Advanced Distribution Management System (ADMS) tools such as an Outage Management System and the self-healing network feature called Fault Detection Isolation Restoration (FDIR).

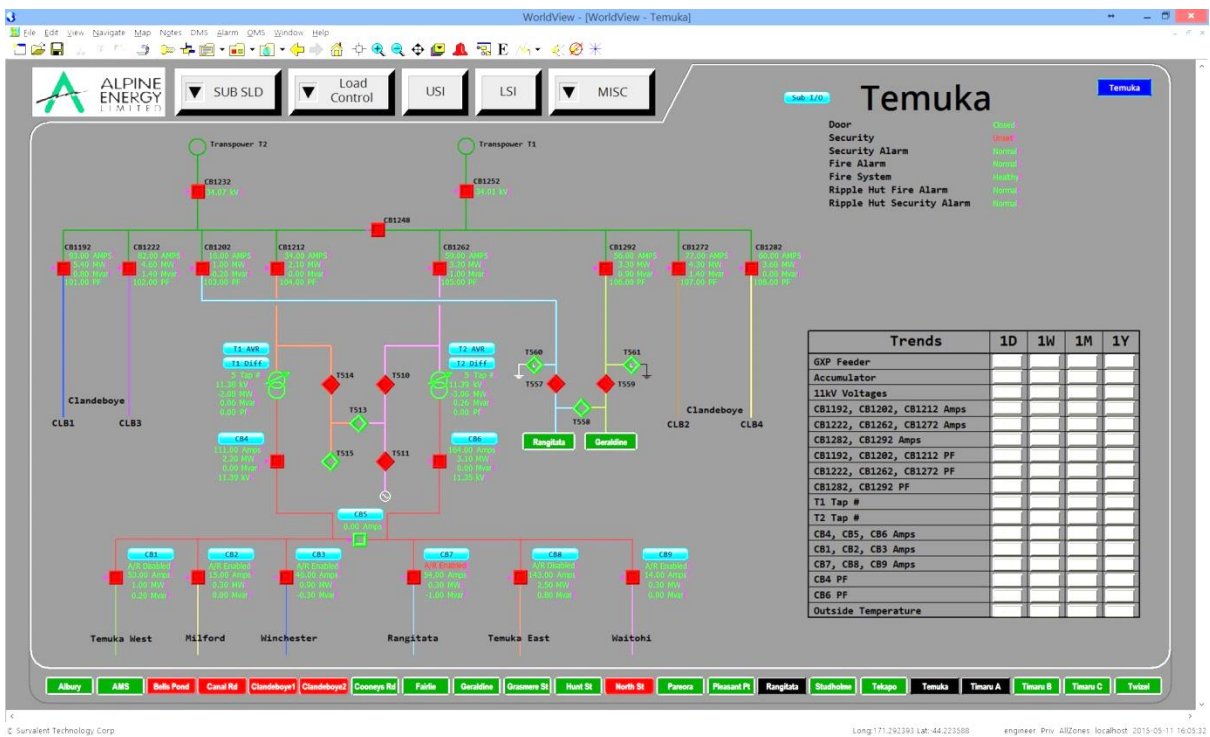
We are very proud of what we have provided to Alpine Energy to date, and this has been due to some great collaboration between the team at Alpine Energy and our SCADA Engineering team.



GIS view of Alpine Network



Zoomed in view of GIS showing substations



View of substation in Alpine network