

# Make informed decisions, Improve your business performance

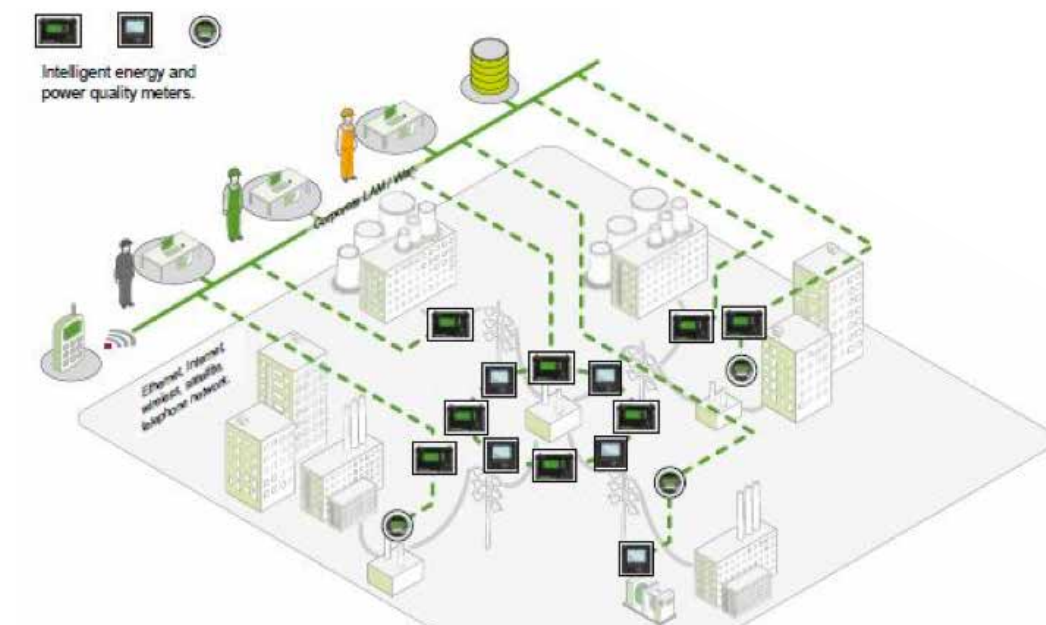
Today's smart grid is complex. It requires constant monitoring to manage capacity, reliability, efficiency, and sustainability. You also need to balance increasing demand and tighter energy requirements – all the while staying competitive and profitable.

A PowerLogic metering system from Schneider Electric delivers the critical information you need, giving you the energy awareness that helps you stay competitive by maximizing the performance of your existing infrastructure and improving customer satisfaction.

- Ensure settlement accuracy at all interchange points to avoid expensive errors
- Improve network reliability and mitigate system losses
- Enhance substation automation for greater operational performance
- Monitor feeders and critical loads to get a deeper understanding of your network
- Verify compliance to the latest power quality standards and avoid contract disputes
- Isolate, analyze and correct the source of power quality problems quickly and prevent future occurrences
- Help customers manage reliability using operational and power quality data

PowerLogic meters integrate seamlessly into existing systems, delivering actionable information to fulfill the needs of multiple departments. Use the same meter for precision grid-metering, load planning, compliance monitoring and PQ analysis. Designed with patented ION architecture, our meters have the flexibility your applications need as they evolve and grow with your requirements, all without replacing your metering infrastructure.

Schneider Electric is a pioneer in digital metering for utilities. Thousands of utilities around the world use PowerLogic metering systems to help maximize the integrity of their networks, improve business performance, and comply with ever evolving regulations. Schneider Electric can help you achieve your operational goals, too, with a fast and quantifiable return on your investment.



PowerLogic meters integrate seamlessly into your existing systems



Meet new challenges with higher accuracy metering and higher network integrity

## > PowerLogic high-accuracy energy and power quality metering for your entire network<sup>1</sup>

<ul style="list-style-type: none"> <li>&gt; Ideal for all electrical environments; tested, validated and compatible with all PowerLogic software solutions.</li> <li>&gt; Standardised configuration, flexible customisation, modular I/O and communications, and remote display options.</li> <li>&gt; Support for international utility standards, form factors and protocols.</li> </ul>	Advanced revenue metering, energy metering and power quality analysis						Midrange energy metering and power quality analysis		Basic energy sub-metering		
	ION8800		ION8650			ION7650	ION7550	ION7350	ION7330	ION6200	
Features <sup>2</sup>	A	B	C	A	B	C					
Inputs, outputs and control power											
3-phase / single-phase	■ / ■	■ / ■	■ / ■	■ / ■	■ / ■	■ / ■	■ / ■	■ / ■	■ / ■	■ / ■	■ / ■
Digital in and out / analog in and out	16 / -	16 / -	16 / -	16 / 4	16 / 4	16 / 4	20 / 8	20 / 8	8 / 8	8 / 8	2 / -
Power supply options	AC/DC	AC/DC	AC/DC	AC/DC	AC/DC	AC/DC	AC/DC	AC/DC	AC/DC	AC/DC	AC/DC
Power and energy measurements											
Voltage, current, frequency, power factor	■	■	■	■	■	■	■	■	■	■	■
Power, demand	■	■	■	■	■	■	■	■	■	■	■
Energy / time-of-use (energy per shift)	■ / ■	■ / ■	■ / ■	■ / ■	■ / ■	■ / ■	■ / ■	■ / ■	■ / ■	■ / ■	■ / -
IEC / ANSI energy accuracy class (% of reading)	0.2	0.2	0.2	0.1	0.1	0.1	0.2	0.2	0.5	0.5	0.5
Loss compensation	■	■	■	■	■	■	■	■	■	■	■
Power quality analysis											
EN50160 Ed.4 compliance reporting / IEC 61000-4-30 Class A/S	■ / A	■ / S		■ / A	■ / S		■ / A				
Flicker measurement	■	■		■	■		■				
Transient detection / disturbance direction	■ / -			■ / ■	■ / ■		■ / ■	- / ■			
Sag/swell monitoring	■	■	■	■	■	■	■	■	■	■	■
Harmonic distortion: total / individual / inter	■ / ■ / ■	■ / ■ / -	■ / ■ / -	■ / ■ / ■	■ / ■ / -	■ / ■ / -	■ / ■ / -	■ / ■ / -	■ / ■ / -	■ / ■ / -	■ / - / -
Waveform capture	■			■			■	■	■		
On-board data and event logging											
Trending / forecasting / billing	■ / - / ■	■ / - / ■	■ / - / ■	■ / - / ■	■ / - / ■	■ / - / ■	■ / ■ / ■	■ / ■ / ■	■ / - / ■	■ / - / ■	
Minimum / maximum	■	■	■	■	■	■	■	■	■	■	■
Events and alarms with timestamps	■	■	■	■	■	■	■	■	■	■	■
Timestamp resolution (seconds)	0.001	0.001	0.001	0.001	0.001	0.001	0.001	0.001	0.01	0.01	
Time sync: Network / GPS / IRIG-B	■ / ■ / ■	■ / ■ / ■	■ / ■ / ■	■ / ■ / ■	■ / ■ / ■	■ / ■ / ■	■ / ■ / -	■ / ■ / -	■ / - / -	■ / - / -	
Setpoints, alarms and control											
Log alarm conditions / call out on alarm	■ / ■	■ / ■	■ / ■	■ / ■	■ / ■	■ / ■	■ / ■	■ / ■	■ / ■	■ / ■	■ / ■
Trigger data logging	■	■	■	■	■	■	■	■	■	■	■
Trigger relay or digital output	■	■	■	■	■	■	■	■	■	■	■
Special features											
Custom programming: arithmetic / boolean / modular	■ / ■ / ■	■ / ■ / ■	■ / ■ / ■	■ / ■ / ■	■ / ■ / ■	■ / ■ / ■	■ / ■ / ■	■ / ■ / ■	■ / ■ / ■	■ / ■ / ■	■ / ■ / ■
Downloadable firmware	■	■	■	■	■	■	■	■	■	■	■
Communications											
Ports:											
Ethernet: (C)opper, (F)ibre / Ethernet-to-serial gateway	■ / ■	■ / ■	■ / ■	■	■	■	■ / ■	■ / ■	■	■	■
Modem / Modem-to-serial gateway	■ / ■	■ / ■	■ / ■	■ / ■	■ / ■	■ / ■	■ / ■	■ / ■	■ / ■	■ / ■	■ / ■
Optical	■	■	■	■	■	■	■	■	■	■	■
RS485 / RS232	■ / ■	■ / ■	■ / ■	■ / ■	■ / ■	■ / ■	■ / ■	■ / ■	■ / -	■ / -	■ / -
Web server / email / SNMP / XML	■ / ■ / - / ■	■ / ■ / - / ■	■ / ■ / - / ■	■ / ■ / - / ■	■ / ■ / - / ■	■ / ■ / - / ■	■ / ■ / ■ / ■	■ / ■ / ■ / ■	■ / ■ / - / -	■ / ■ / - / -	■ / - / - / -
Protocols: Modbus / DNP / MV-90 / DLMS / IEC 61850 <sup>3</sup>	■ / ■ / ■ / ■ / ■	■ / ■ / ■ / ■ / ■	■ / ■ / ■ / ■ / ■	■ / ■ / ■ / ■ / ■	■ / ■ / ■ / ■ / ■	■ / ■ / ■ / ■ / ■	■ / ■ / ■ / ■ / ■	■ / ■ / ■ / - / ■	■ / ■ / ■ / - / ■	■ / ■ / ■ / - / -	■ / ■ / - / - / -

<sup>1</sup>This is not a complete list of meter models, features and specifications; please refer to the product documentation for more detail.  
<sup>2</sup> Specifications represent maximum capabilities with all options installed; some options are not available concurrently.  
<sup>3</sup> ION8800, ION8650, ION7650, ION7550 offer Modbus Master capabilities.

## Stay competitive with PowerLogic metering systems

### > StruxureWare Power Monitoring Expert

A complete, interoperable and scalable power monitoring software application

Power Monitoring Expert is the ideal software to monitor, trend, analyze and report on your PowerLogic metering system. Real-time monitoring, alarming and power quality analysis helps you avoid critical conditions that can cause network outages and downtime.

- Features a scalable, flexible architecture to leverage and optimize your existing infrastructure
- Provides open standards-based interoperability for sharing data with third-party systems
- Offers secure browser-based access to real-time dashboard displays and graphical system views, historical trend data, alarm and event notifications, power quality analysis, and reporting to international standards (IEC 61000-4-30, EN50160)
- Saves thousands of engineering hours with preconfigured tables, views, and dedicated power and energy management reports

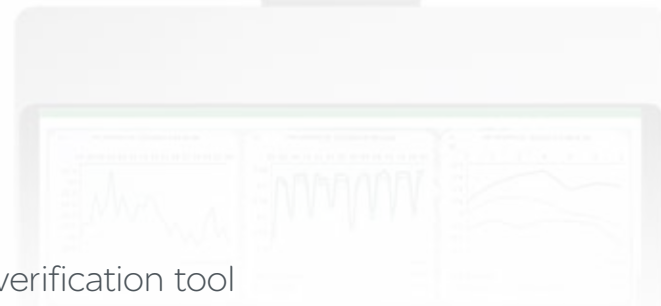


### > PowerLogic ION Setup

A free, user-friendly meter configuration and verification tool

Based on workflows common to utility meter shops, ION Setup provides an intuitive environment for programming and verifying settings on PowerLogic meters.

- Performs meter firmware upgrades and includes complete meter diagnostics
- Provides template-based programming for cloning configurations across multiple meters
- Offers remote collection of data recorder and event logs for input into other systems
- Features off-line programming for configuring and testing meter templates



# Drive network efficiency

PowerLogic metering systems

Panorama for electric utility applications



Make the most of your energy<sup>sm</sup>

Schneider Electric Industries SAS  
Head Office  
35 rue Joseph Monier  
92500 Rueil Malmaison Cedex- France  
Tel.: +33 (0)1 41 29 70 00  
www.schneider-electric.com

**Schneider**  
Electric



11/14

©2014 Schneider Electric. All Rights Reserved. Schneider Electric, PowerLogic, and Make the most of your energy are trademarks owned by Schneider Electric Industries SAS or its affiliated companies. All other trademarks are property of their respective owners. EDCED112022EN

**Schneider**  
Electric